

Imagine Udny: Past – Present – Future, Results, Demographics

Statistics

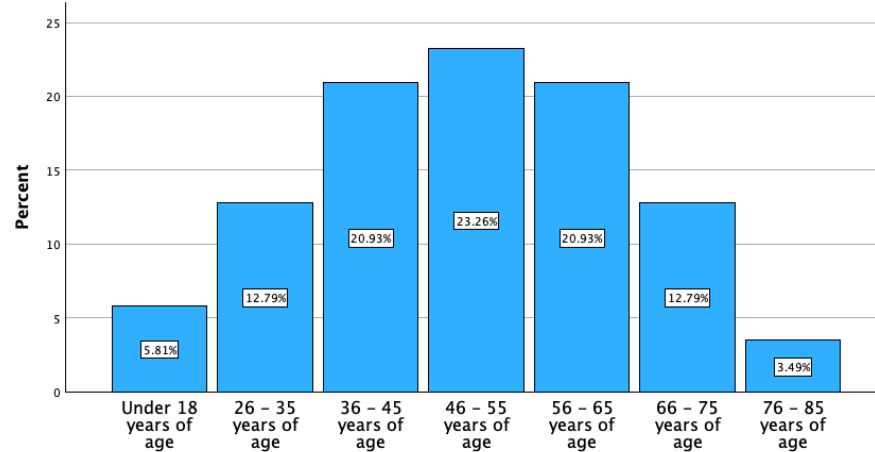
How old are you?

N	Valid	86
	Missing	0

How old are you?

		Frequency	Percent	Valid Percent	Cumulative Percent
Valid	Under 18 years of age	5	5.8	5.8	5.8
	26 - 35 years of age	11	12.8	12.8	18.6
	36 - 45 years of age	18	20.9	20.9	39.5
	46 - 55 years of age	20	23.3	23.3	62.8
	56 - 65 years of age	18	20.9	20.9	83.7
	66 - 75 years of age	11	12.8	12.8	96.5
	76 - 85 years of age	3	3.5	3.5	100.0
Total		86	100.0	100.0	

How old are you?



Statistics

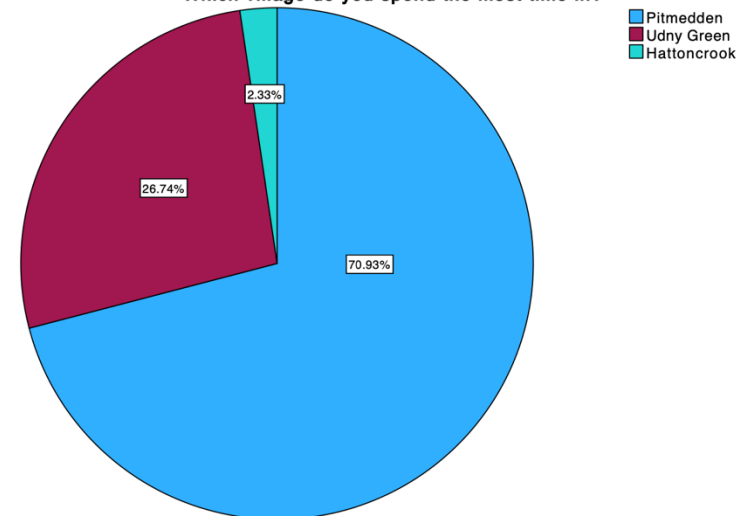
Which village do you spend the most time in?

N	Valid	86
	Missing	0

Which village do you spend the most time in?

		Frequency	Percent	Valid Percent	Cumulative Percent
Valid	Pitmedden	61	70.9	70.9	70.9
	Udny Green	23	26.7	26.7	97.7
	Hattoncrook	2	2.3	2.3	100.0
	Total	86	100.0	100.0	

Which village do you spend the most time in?



A brief note on how to interpret the tables and graphical information above:

The statistics section at the top of each segment of question analysis shows the number of valid responses (where someone provided an answer) and the number of missing responses (where the respondent did not give an answer).

The frequency tables for each question, below the statistics table, indicate the number and percentage of respondents who chose each option.

- The **Frequency** (1) and **Percent** (2) columns in the tables indicate (1) the number of responses in each response option and (2) the percentage of respondents who chose each response option. Both columns include the missing answers for that question as part of the total response set. In short, **Frequency** is how many people gave the answer and **Percent** is the portion of people who answered the questionnaire in general that gave the answer.
- The **Valid Percent** column indicates the percentage of responses in each option out of those who did respond to the question. For example, if in a survey of 80 respondents, 70 answered Question 1 and 20 of those respondents chose Option A, the valid percent for Option A would be 28.6%, calculated by dividing the 20 given responses by the 70 valid responses to the question and ignoring the 10 missing responses. In short, **Valid Percent** is the portion of people who chose an answer out of those who answered the question.
- The **Cumulative Percent** column informs about the percent of responses that fall in multiple categories. For example, for level of agreement questions, if the cumulative percent in the 'Agree' row is 60%, it means that 60% of respondents either chose 'Agree' or the row above it, 'Agree Strongly'. In short, **Cumulative Percent** groups the valid percent of multiple answers into a larger portion out of the question respondents.

The bar and pie charts for the different results are graphical representations of the **valid percentages** of each response for a question and can be read as such.